

Swarthmore Education Centre Annual Report

2023-2024



Contents

Front Cover	Page 1
Contents Page	Page 2
Introduction from Chair of Trustees and Director	Page 3
Finance	Page 4
Workshops	Page 5
Courses	Pages 6 and 7
Study Programme	Pages 8 and 9
Creative Communities	Pages 10 and 11
Swarthmore Hardship Fund	Pages 12 and 13
Room Hire	Page 14
Cafe	Page 14
Awards	Page 15
Exhibitions	Page 15
Projects and Events	Page 16
Supporting the Community	Page 17
Technology and Infrastructure	Page 18
Building and Facilities	Page 18
Meet the Team	Page 19
We Said, We Did	Page 20
Next Steps	Page 20



Julie Badon
Chair of Trustees



As I complete my seventh year as Chair of Trustees at Swarthmore, I am proud to reflect on a year that, while not without challenges, has been one of growth and resilience. Despite facing rising costs and the need to balance pay increases, I am pleased to report that we closed the year with a small financial surplus of £8,098, exceeding our expectations.

Building on the recovery and growth of previous years, 2023/24 has seen Swarthmore continue to develop as a vibrant organisation. At our 2023 AGM we outlined a bold business strategy, prioritising investment in staff and the expansion of our adult education courses. I am delighted to see this strategy yielding results, with increased room hire income supported by enhanced marketing efforts and improved facilities. We also introduced LED lighting, significantly reducing both our carbon footprint and utility costs, and established a clearer, prioritised capital investment programme.

Our turnover has grown from £1.75M to £1.94M, a testament to our strategic investments. We've also strengthened our commitment to inclusivity through initiatives like the "Creative Communities" project, funded by the National Lottery, which brought learning opportunities to underserved areas in Leeds including Hunslet, Belle-Isle, Middleton, and Holbeck. Additionally, our "warm space" funding provided vital support during winter, offering a welcoming environment for those struggling with heating costs.

A highlight of the year was the launch of our Hardship Fund, which provided crucial support for students unable to afford courses or materials. This initiative embodies Swarthmore's mission of lifelong learning for all. Alongside these efforts we achieved significant savings by streamlining software licensing, and service contracts, contributing to our positive financial outcome.

We continued to meet our obligations under the Government's Coronavirus Business Interruption Loan Scheme (CBILS), maintaining repayments despite the 8% interest rate.

This year also marked a heartfelt farewell to our café team, who collectively served Swarthmore for 45 years. While their departure closes one chapter, it opens an exciting opportunity for future improvements to this service.

Our successes this year reflect the dedication and hard work of our staff, managers, and trustees, all of whom have contributed to building a positive and forward-looking culture. With learners firmly at the heart of everything we do, I am confident Swarthmore will continue to thrive, delivering exceptional lifelong learning opportunities for adults across Leeds.

Well done to everyone for an incredible team effort.

Chris Baillie
Director



Reflecting on a year of achievements, we're pleased to share the progress Swarthmore Education Centre has made, thanks to the dedication of our staff, trustees, volunteers, and students. Our financial outcome shows significant improvement over previous years, a testament to the hard work of our community as we continue working toward long-term stability.

In inspections this year, our Adult Learning programme, delivered with Leeds City Council, received an Outstanding rating from Ofsted. This recognition highlights our commitment to supporting learners, many of whom face substantial challenges, and reflects our inclusive, supportive environment. Although our Study Programme received a 'Requires Improvement' rating, this doesn't capture the full picture of our students' personal progress or our team's dedication to their growth. Swarthmore remains committed to the development and success of every student.

This year we launched our new website and improved our social media presence. We hosted numerous events, including the Politics Through Poetry series led by John Battle and a collaborative printmaking event celebrating the International Day of Disabled People. Supported by Welcome Space funding we provided a warm, welcoming space as winter approached. In March we sponsored the Festival of Play, promoting creativity across Leeds, and were honoured to be shortlisted for the Third Sector Award at the Educate North Awards in recognition of our community impact.

We made practical improvements by installing energy-saving LED lighting, which reduces our environmental footprint and supports our budget. October saw the launch of a Hardship Fund to help ensure accessibility to our courses, regardless of financial circumstances. With the departure of café team members in May, we look forward to reopening the café in September 2024.

Our Creative Communities project, launched with Lottery funding in July, has been a resounding success. We delivered workshops in South Leeds with a Pride in Place theme, engaging local organisations and residents. In the upcoming year we'll welcome two artists in residence who will collaborate with the community and create enduring artwork.

We closed the academic year with a memorable outing to Scarborough with our Study Programme students, a fitting celebration of the year's hard work. Thank you to everyone who contributes to making Swarthmore a centre of learning, creativity, and community for all.

Finance

Income and Expenditure

2023/24		2022/23	
Total Income	£1,937,942	Total Income	£1,756,093
Wages and Salaries	£1,423,836	Wages and Salaries	£1,363,927
Other Expenditure	£506,008	Other Expenditure	£462,590
Total Expenditure	£1,929,844	Total Expenditure	£1,826,517
Surplus	£8,098	Deficit	-£70,424

Retained Funds		Retained Funds	
Fixed Assets	£1,069,653	Fixed Assets	£1,114,225
Free Reserves	£167,964	Free Reserves	£108,753
Total Unrestricted Funds	£1,237,617	Total Unrestricted Funds	£1,222,978

Employees/Staffing		Employee/Staffing	
Average Headcount	80	Average Headcount	71
FTE	48	FTE	45



To view full accounts, scan QR code.

Year two of Swarthmore's Business Strategy has brought continued growth in adult education provision and reinforced the strength and reputation of the well-regarded Study Programme. Alongside efforts to enhance secondary income streams such as room hire and the Café, these developments have significantly improved Swarthmore's financial position in 2023/24, laying a strong foundation for the years ahead.

The Business Strategy has also prioritised investment in people, addressing an HR imbalance that had built up over the past decade. However, the progress achieved reflects the hard work and dedication of Swarthmore's staff and, in particular, the senior management team who have worked to broaden the range of courses and identify ways to operate more efficiently. This collective effort underscores the organisation's ethos and its pivotal role within the Leeds community.

While there is much to celebrate, challenges remain. Rising energy costs and increases in National Insurance Contributions announced in the Autumn Budget will require careful management. Investments in Swarthmore's building and IT infrastructure are also critical to supporting future growth and innovation.

Despite these challenges, Swarthmore is well-positioned for continued success. With a deeper understanding of the financial mechanisms underpinning its operations, and a steadfast focus on meeting the needs and ambitions of its students, the organisation is poised to thrive. The commitment of everyone connected to Swarthmore will be key to ensuring its lasting impact on the community.



Nigel Hussain Mohammed Zaman - Treasurer

Workshops

After recruiting a number of new freelance artists, we were able to significantly increase our workshop provision and offered a wide variety of sessions including:

Introduction to Crochet
Throwing on the Potters Wheel
Experimental Drawing
Portrait Painting
Make a Silver Ring
Memoir Writing

We welcomed
219 workshop
participants to
Swarthmore.



For more info on courses
and workshops including
booking, scan QR code.



"A brilliant evening! Really mindful and a great sense of satisfaction at the end of the night. Thank you."

Participant on Spring Wreath Making

"Rhiannon created a lovely, inclusive, relaxed atmosphere and gave clear instruction. So glad I came. It's been wonderful."

Participant on Folklore Lino Printing

"Fantastic workshop, would certainly recommend to others. Tutor was very helpful. Overall a very enjoyable experience."

Participant on Still Life Painting and Drawing



Courses

Leeds City Council Courses

The Leeds City Council Partnership received an Outstanding Ofsted grading in December 2023. As part of this partnership we offer a wide range of courses including arts, crafts, English and Maths. Our aim is to support health and wellbeing and improve confidence through learning. These courses are subsidised by council funding and are free to those on benefits or low income (less than £25,000).



Leeds City Council Ofsted 11-14 Dec 2023

Outstanding

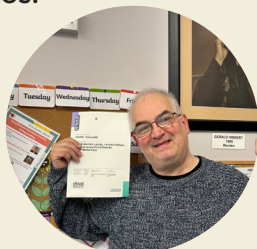
"Teachers have high expectations of their learners, many of whom face significant barriers to learning. They know their learners well and take effective action to enable them to participate fully in education. Teachers are clear about the importance of attendance, conduct and hard work. Learners value the support of their teachers and reciprocate by maintaining good attendance, arriving punctually and taking part enthusiastically in learning sessions"

The Growth Project

Funding for the Growth Project came to an end in March 2024. However, we sourced funding via Community Links to continue supporting their service users with Maths and English classes until July 2024.

Leeds City College Courses

Our funding through Leeds City College allows us to offer a range of accredited courses to our learners such as English, Maths and Digital Skills. This year our supported learners achieved qualifications and were proud to receive their certificates.



Adult Learning Courses

Total Enrolments 23/24
• 1453
Total number of Courses
• 182

Courses

Swarthmore Courses

Swarthmore offers a range of self-financing courses at the Centre. Many of these are held in our fully equipped customised workshop spaces including pottery, stained glass, and jewellery.

"I learnt some basic skills which will enable me to continue to build on them. I feel encouraged to go forward onto the next course in September. It was a lovely friendly atmosphere to work in. I would like to say a big heartfelt thank you! It has helped me so much with my confidence and my mental health."

Swarthmore Courses

Enrolments 23/24

- 549

Number of Courses

- 61

Leeds City Council Courses

Enrolments 23/24

- 871

Number of Courses

- 117

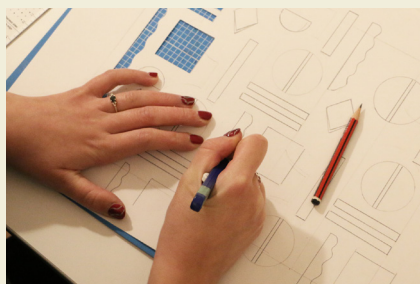
Leeds City College Courses

Enrolments 23/24

- 33

Number of Courses

- 4



"Enjoyed my course on different printing methods inspired by nature. It was my first face to face course in recent years so was great for wellbeing, gaining confidence in being out and about in the city centre, using public transport and meeting new people. Tutors were welcoming and supportive throughout, introducing us to a range of new skills, tools and media. Thank you Swarthmore. I hope to join another course soon."



Study Programme

Our teachers and TAs support our learners to thrive, progress, and challenge themselves, developing their potential to achieve their aspirations, whilst addressing the unique challenges of our high-needs students. This dedication is reflected not only in the classroom but also in extracurricular activities - our football team proudly secured second place in a recent tournament, showcasing their teamwork and determination.

Whilst we were disappointed to have been graded as 'Requires Improvement' for our Study Programme during the November 2023 Ofsted Inspection, Swarthmore remains fully committed to the education and personal development of all of our students, and we continue to make improvements across our provision.

An Ofsted visit is simply a snapshot of what happens within the centre and does not give the opportunity for us to share, and celebrate, the amazing achievements and progress our students make.



Student Achievements

Functional Skills:

- 10 passed Level 1/2 English, with 3 completing two components.
- 5 passed Level 1/2 Maths.

GCSEs and Higher Levels:

- 6 completed GCSEs (English, Maths, History, Media).
- 2 achieved AS History grades (C and D).
- 1 student earned a B in A-Level Maths.

Certificates:

- 18 Maths Entry Level certificates.
- 4 Manual Handling certificates.
- 41 Gateway English units and 42 Employability units completed.

"The college helps me mellow down from the anger I had at high school. I'm treated with respect. It's helped me become a better person."

Student

Destinations and Work Experience

Out of 15 leavers, 9 progressed to further education, employment, or voluntary roles. Over 60% of students participated in work experience, with 39 completing placements across various sectors. Group projects included work at Meanwood Urban Valley Farm and Leeds City Museum.

Community Engagement

Wellbeing and community involvement remains central to our programme. Students participated in local markets, supported food banks, and engaged with museums, libraries, and other organisations. Regular activities included workshops, placements at charity shops, and visits to Meanwood Valley Urban Farm. These experiences build confidence, independence, and valuable life skills while fostering strong community ties.

We launched a curated student display at Leeds City Museum, showcasing Swarthmore's history and students' achievements. Upcycled chairs made by students are also featured, with one being sold to raise funds.

"I would recommend this college because it makes you feel welcomed and appreciated. They've helped me with maths and English. I give them five stars!"

Student



Parent Feedback

Parents praised the programme for its impact on confidence and well-being:

- *"J has grown this year in confidence. The Study Programme provides tools to move forward in life."*
- *"Swarthmore helped A with money management and studies, improving his confidence."*
- *"K loves the creative lessons and feels supported emotionally by staff."*



Conclusion

This year's achievements reflect our commitment to delivering a high-quality learning experience tailored to each student. We will continue to build on this progress, fostering confidence and independence while maintaining strong community connections.

Meet the Team

Eloise - Teaching Assistant

"Swarthmore is a vibrant, inclusive, and supportive community. As a Teaching Assistant I've had the opportunity to learn a lot about the diverse needs of others, and how we can collectively foster growth and understanding. I really enjoy spending time with both students and staff, and each interaction teaches me something new. The centre plays a vital role in helping people overcome challenges, and I'm grateful to be part of an environment where we all contribute to one another's learning and development."

Tim - Job Coach for SEND Students

"Swarthmore Education Centre is known for fostering an environment of intellectual curiosity, collaboration, and a strong sense of community. Staff and students work together in a way that emphasises mutual respect and shared goals, which can make professional interactions deeply rewarding. Swarthmore's dedication to values like inclusivity, sustainability, and social impact can make your work feel aligned with a greater purpose."

Creative Communities: 2023-2025

Community Lottery Fund

The first year of our National Lottery-funded Creative Communities project brought meaningful arts experiences to South Leeds, targeting areas affected by poverty and social exclusion, including Hunslet, Holbeck, Middleton, Belle Isle, and later Beeston.



Community Engagement

We delivered art and craft workshops, which would usually be out of economic reach, in six-week cycles designed to improve wellbeing, reduce isolation and celebrate pride in place. Workshops included all materials and refreshments in a welcoming environment.

Key to success was community presence. We engaged with local food pantries, breakfast clubs, and events, using pop-up conversations and promotional tools like social media, posters, and South Leeds Life articles. Partnerships with community organisations, social prescribing networks, and mental health services helped build community trust and generated participant referrals. Many of those attending faced issues relating to poverty, lack of formal education opportunities, isolation, poor mental health, and challenging lives. Our flexible and supportive approach has encouraged positive attendance and engagement.

**We delivered 71
FREE
workshops**

**We engaged 124
participants**

*"I loved every week! The time for myself
was wonderful - I surprised myself at
the creativity"*



Artistic Impact

- Jack Riley taught photography and local exploration through mobile phones.
- Nicole Colbert's rag-rugging celebrated local landmarks.
- Maria Santos' clay work explored local history.
- Tracy Lau used mask-making to evoke emotion and personal narratives.
- Elnaz Yazdani's experimental embroidery mapped the community.

**We collaborated
with more than
20 professional
artists**

Celebrating Local Heritage

Collaborating with Leeds Museum we organised two trips to the Discovery Centre, where participants explored South Leeds artefacts.

Volunteer Engagement

Through platforms like Facebook and Voluntary Action Leeds we recruited eleven volunteers, with a further seven who have expressed interest in volunteering for next year. Volunteers received training which included safeguarding, confidentiality, and support strategies. Through our training and ongoing support, we aim to provide guidance to help participants with a range of needs and experiences. Two Exhibition Volunteers curated participant artworks for end-of-year Celebration Events, showcasing achievements.

11 volunteers supported the workshops

2 participants moved on to volunteering roles



Celebration Event

At the end of the year we held celebration events in the localities to showcase all the wonderful work created during our first year.

The people who came loved seeing their own artwork exhibited and showing it off to friends, relatives, volunteers and professionals involved in the community, providing a real boost to self-esteem.

"I've always wanted to try mosaics. It was a very supportive place. I felt safe enough to come when my mental health was bad, and when I got my cancer diagnosis, just such a nice place to be when I was struggling."

Outcomes

The workshops proved how creativity in a supportive space transforms lives. Participants proudly displayed their work, some keeping it at home as reminders of their achievements, while others enjoyed seeing their creations displayed in the community. These experiences fostered pride, well-being, and a sense of belonging, exemplifying the power of art and creativity.



Swarthmore Hardship Fund

Making Education Accessible

Launched in September 2023, the Swarthmore Hardship Fund has already had a profound impact, helping to ensure that financial barriers don't stand in the way of education and personal growth.

Supporting Our Community:

In the 2023/24 academic year, we received 30 applications for support, demonstrating the vital need for this initiative. Thanks to the incredible generosity of our donors, and the success of our fundraising activities, we raised an impressive £4,455. Of this, £1,165 has already been allocated to students who might otherwise have been unable to access learning opportunities.

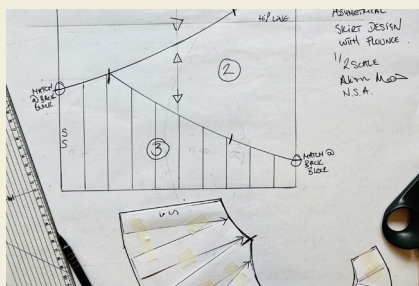
"Having a disability stops me from pursuing so many of my old hobbies, not only because of the physical challenges but also the financial implications. The Swarthmore Hardship Fund contribution has allowed me to attend an art class without constantly worrying whether I can afford it. This has given me a new interest and has been a great help to my mental health and confidence. Thank you."

Thank You for Your Support:

We are deeply grateful to everyone who has donated or supported our fundraising efforts. Your generosity has made a real difference, allowing students to participate in courses and access the opportunities they deserve.

Looking Ahead:

The journey doesn't stop here. We continue to welcome applications from those in need and encourage ongoing donations to help us reach even more people in the coming year. Together we can make education accessible to all.



To make a donation to the Hardship Fund, scan QR code.

"I came to the ceramics courses at Swarthmore after being diagnosed with a chronic pain condition that affects my mobility. Without the Hardship Fund I would not have been able to continue growing my knowledge and developing a love of working with ceramics. Regularly attending classes has had a profound, positive effect on my physical and mental health."

Kim's Story - donation £500



Kim Taylor, Swarthmore Tutor 2020 - 2021

My sister Kim Taylor, or Pascha as she was known to her friends, was a life long learner. From a very early age she was inquisitive about people and cultures and places and in the human experience generally. It was no surprise that she became a teacher after her degree and masters degree.

She got a real thrill in seeing people thrive and learn and progress (not measured by exams, but on an individual development level) and fully understood that learning is an individual experience and so the outcomes that she strove to help people reach were always very much tailored to that person.

Her career started with primary school children, then progressed through all age groups, then supporting local communities and latterly working with adults at Swarthmore college. I honestly believe that the years she worked at Swarthmore (and at Forster college before that) were the most rewarding for her. She spoke very fondly of the students and the challenges that they faced, the planning that she did to arrange activities and outings that would support and stretch them and enrich their experience and often fed back the results.

Nothing frustrated her more than not being able to deliver suitable courses and experiences. Ever resourceful, she often overcame issues to achieve what she needed to achieve. However, one harsh reality is that the very people she needed to teach were often financially disadvantaged due to their own learning issues or status. Often their situation could deprive them of access to assistance they so badly needed to improve their circumstances. Citizenship, social anxiety, financial struggles or learning difficulties can reduce peoples self worth, chances to be employed and quality of life.

Kim saw her work as a vocation, a worthwhile investment of her time, talent and energy, if it helped others even just a little bit. You only have to see the joy in her appearance on BBC's the One Show "Teaching Yorkshire" to understand her approach. I feel that she would have "dun it fer nowt!" rather than give it up or give up on someone who needed support.

I have had several opportunities to make donations of one kind or another to causes that mattered to Kim since she passed away. I am sure there will be others as time unfolds. But I feel that she would greatly approve of donations to the Hardship Fund at Swarthmore because it continues her legacy of enabling learning in people who need it the most but have difficulty accessing it.

David Taylor



To apply for Hardship Funding to access a course/workshop, scan QR code.

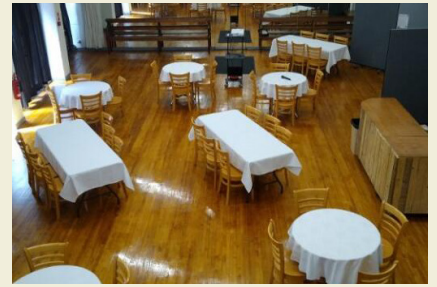
"I was so grateful to be able to benefit from the student Hardship Fund. Being on a basic state pension I would never have been able to enrol on the art courses I wanted to. I loved doing them and it gave me something to look forward to."

Room Hire

Swarthmore has several rooms for hire, ranging from small meeting rooms for 10 people to our large hall which accommodates 150 seated people.

We have something for every event.

Wifi, projector, large screen displays, interactive whiteboards and sound equipment. A portable bar and table tennis table are also available to hire.



If it's your first booking with us - you'll receive a special discount of 25%

"From first contact to our last day in the building, hiring a space at Swarthmore was perfect. The people are lovely, the facilities are great and everyone makes sure you have what you need to do your best work."

"Prices are accessible, in times of great challenge for the arts and creative industries this is important. I would book Swarthmore again in a heartbeat!"

Emma Hill - Guest Artistic Director, Leeds Opera Festival



For more info on room hire including booking, scan QR code.

Café

When the longstanding café team left Swarthmore in May we partnered up with Café Solutions Ltd to ensure the continued provision of Free School Meals to eligible Study Programme Students. The Café itself was only able to continue in the form of a scaled down "Tuck Shop" until the end of the academic year, facilitated by Swarthmore staff.

From the start of the 2024/25 Academic Year, Café Solutions reopened the Café trading as Café no 5 with a new menu, as well as continuing to provide the free school meals.



Awards

Educate North Award - Shortlisted for the 'Third Sector Award'

We were delighted to be shortlisted for the Third Sector Award, a recognition that celebrated the dedication and hard work of our staff, volunteers, and students. Overcoming challenges in recent years, we have supported our community through innovative education and creative projects, always putting people at the heart of what we do. This proud moment showcased our commitment to making a lasting difference and highlighted the positive impact of our efforts.



Leeds Adult Learning Award - Above and Beyond Tutor Award

Amy Smith - Swarthmore Tutor

"Amy has unwavering enthusiasm and dedication to her students. The sheer variety and breadth of her teaching is wonderful. She creates a learning environment that is as nurturing as it is empowering, which in turn builds students' confidence and resilience. She goes above and beyond, constantly developing her own skills, researching new and exciting activities and brings her own enthusiasm for learning and development to the classroom every day."



Exhibitions

Swarthmore hosts a programme of exhibitions throughout the year. These are carefully curated in-house and are installed in the Café area. We're committed to supporting our students and we often exhibit their work which has been produced on our creative courses. This is a fabulous way to celebrate the achievements of Swarthmore students and tutors alike.



1st December 2023 - 'Fantasy Art' - Steve Beaumont

8th February 2024 - 'Brush Strokes' - Swarthmore Students from Oil, Acrylic and Watercolour Courses

29th April 2024 - 'Amalgamation' - BA Photography Exhibition Leeds Arts University

1st May 2024 - 'Humans of Swarthmore' - Hannah Limbachia

17th May 2024 - 'A Collection' - Alex Shenton: Study Programme Student

Projects and Events

IDODP - Funding Received £350

International Day of Disabled People

In December 2023 we delivered an inclusive print session led by Swarthmore tutor, Clair Thompson. A free buffet for participants was included. 17 people attended the drop-in workshop.

Funded by Leeds Disability Team.



Politics through Poetry

We hosted a series of free talks delivered by John Battle on the topic of Politics Through Poetry. These talks attracted 38 attendees, some of whom had never been to Swarthmore before.



Festival of Play

We supported the Festival of Play by hosting the event in our Hall. The event was well attended by people from across the City.

"The Community of Play were supported by Swarthmore on March 28th to host a meet up to plot the first ever city wide Festival of Play & Creativity. We really loved the room as it allowed us to conduct an 'open space' with close to 50 participants in attendance.

Thank you so much for giving us time & space to gather our ideas and enable new relationships to form."

Emma Bearman



Supporting the Community

Warm Spaces

Swarthmore is proud to be part of the 'Warm Space' initiative, providing a welcoming environment with a free hot drink and soup during the winter months for those in our local community.



Clothing Bank at Swarthmore

This year we introduced a clothing rail in the Café area to support our students and their families. Recognising the need for accessible clothing, especially in colder months, we created a space where students could take what they needed.

Generous donations from staff, students, and the community provided quality clothing, shoes, and accessories for all. This initiative has had a significant impact, fostering community spirit, promoting sustainability, and offering vital support to those who need it most.

Food Bank at Swarthmore

Swarthmore is proud to support our local foodbank through the generosity of our community. Staff and students contribute regularly to our ongoing collection of food items, demonstrating a shared commitment to helping those in need. Additionally, several students from our Study Programme volunteer their time at the foodbank, further strengthening this vital connection and making a meaningful impact in our local area.

Community Events

In 2023/24 Swarthmore attended/hosted a number of events. These included:

- Holbeck Gala
- Kirkstall Festival
- Belle Isle Gala
- The Great Middleton Park Show
- Hunslet Festival
- Beeston Festival



Technology and Infrastructure

Improved Online Presence

We launched our new website in October 2023, significantly enhancing accessibility and improving the learner experience. The new site makes it easier for potential learners to find information about courses, workshops, and enrol online.

Enhanced IT Resilience

In 2023 we strengthened our IT infrastructure by migrating locally held files to cloud platforms, utilising Google Drive and Microsoft SharePoint. This builds upon our existing use of cloud-based services for key operations including accounts, HR, student enrolments, and course delivery.

Cybersecurity Focus:

- We upgraded our server software in early 2024, ensuring ongoing support and compliance with Cyber Essentials requirements.
- We maintained our Cyber Essentials Plus certification in May 2024, demonstrating our commitment to safeguarding learner and organisational data.
- We conducted regular reviews of IT equipment, responsibly disposing of obsolete devices in accordance with the WEEE directive.

IT Support Partnership

Following a competitive tender process we transitioned our IT support services to Datacable Ltd in June 2024. Datacable boasts a 25-year history of providing IT support to the education sector in West Yorkshire, offering valuable expertise and experience.



Building and Facilities

Energy Efficiency

We completed the installation of LED lighting throughout the Centre in early 2024, reducing energy consumption and our carbon footprint.

Building Maintenance

- We replaced two deteriorating windows at a cost of over £10K.
- We carried out necessary carpet replacements.
- We swiftly addressed disruptions caused by local power outages.

Infrastructure Strategy

We are currently developing a comprehensive strategy for maintaining and upgrading our building infrastructure, encompassing heating, electrical, plumbing, and other critical systems.

Meet the Team

Cecilia - Learning Support Assistant

"I feel very fulfilled to work in a place that is welcoming and very respectful to everyone, from staff to students, with a team of excellent professionals who offer opportunities for people to learn and feel very confident, happy and ready to achieve their own goals. I feel privileged to be part of Swarthmore."

Clair - Tutor

"Swarthmore is a centre of learning with its friendly, inclusive, accessible ethos that enables people from all walks of life to learn and explore a diverse range of subjects. It's quite unique and special. The members/learners, staff and volunteers - are what make Swarthmore the great place it is. I think it's impressive what Swarthmore provides adult learners in Leeds; for me, it's really rewarding, and a joy to be delivering creative subjects again, to see learners grow and develop their confidence, knowledge, skills and interests and sense of self through what they're achieving."

Susan - Student Support

"Swarthmore is such a welcoming place; it can give people the confidence to do things they never thought possible. The whole team work together to ensure that visitors new and old have such a positive experience and that they want to come back time after time. I get so much job satisfaction from seeing people who might have initially been nervous about coming to Swarthmore, engaging in courses, learning new skills and making new friends."

Job Opportunities/Volunteering

**DO YOU WANT TO BECOME
A TRUSTEE?**

Volunteer Trustees

A Trustee helps shape the future of an organisation by volunteering their time and expertise.

We're looking for someone who would be a fantastic advocate for Swarthmore and would promote our ethos of lifelong learning.

Workshop and Creative Course Tutors

We are always looking for new talent to join our amazing team in order to widen the range of creative workshops and courses we offer.



For all current
vacancies, scan
QR code.

We Said, We Did

- Launched Hardship Fund
- Launched the new website
- Clothing Bank
- Eventbrite / workshops
- Additional funding

Next Steps

- Source further funding
- Secure new Café provision
- Replace outdated kiln
- Upgrading rooms
- New roles

About Us

Reference and Administrative Details

Charity Number 1094451

Company Number 04527579

Registered Office 2-7 Woodhouse Square,
Leeds LS3 1AD

Auditors

Sagars Accountants Limited
Gresham House,
5-7 St Pauls Street, Leeds LS1 2JG

Bank

Co-operative Bank,
P O Box 250, Delf House,
Southway, Skelmersdale,
WN8 6WT

Key Management Personnel

Director - Christine Baillie

Finance and Services Manager - Philip Johnson

Education Manager - Joan Macleod

Education Manager - Sarah Emmett (until May 2024)

Education Manager - Malgorzata Ciesluk

Directors and Trustees

The Directors of the charitable company (the charity) are its Trustees for the purpose of charity law. The Trustees and Officers serving during the year and since the year end were as follows:

The Trustees

Nigel Hussain Mohammed Zaman

Clancy Walker (resigned 3 December 2023)

Kathryn Julie Badon

Pammi Sinha (resigned 30 July 2024)

Eileen Jaqueline Exeter

Ian Greenwood

Susan Jane Taylor

Lauren Rachael Huxley (resigned 30th January 2024)

Rebecca Jane Lucas (resigned 2 April 2024)

Elizabeth Watkins

Carol Ann Reed (appointed 21 February 2024)

Eleanor Thomson (appointed 24 July 2024)

Trustee Chair - Kathryn Julie Badon

Treasurer - Nigel Hussain Mohammed Zaman

Company Secretary - Christine Baillie